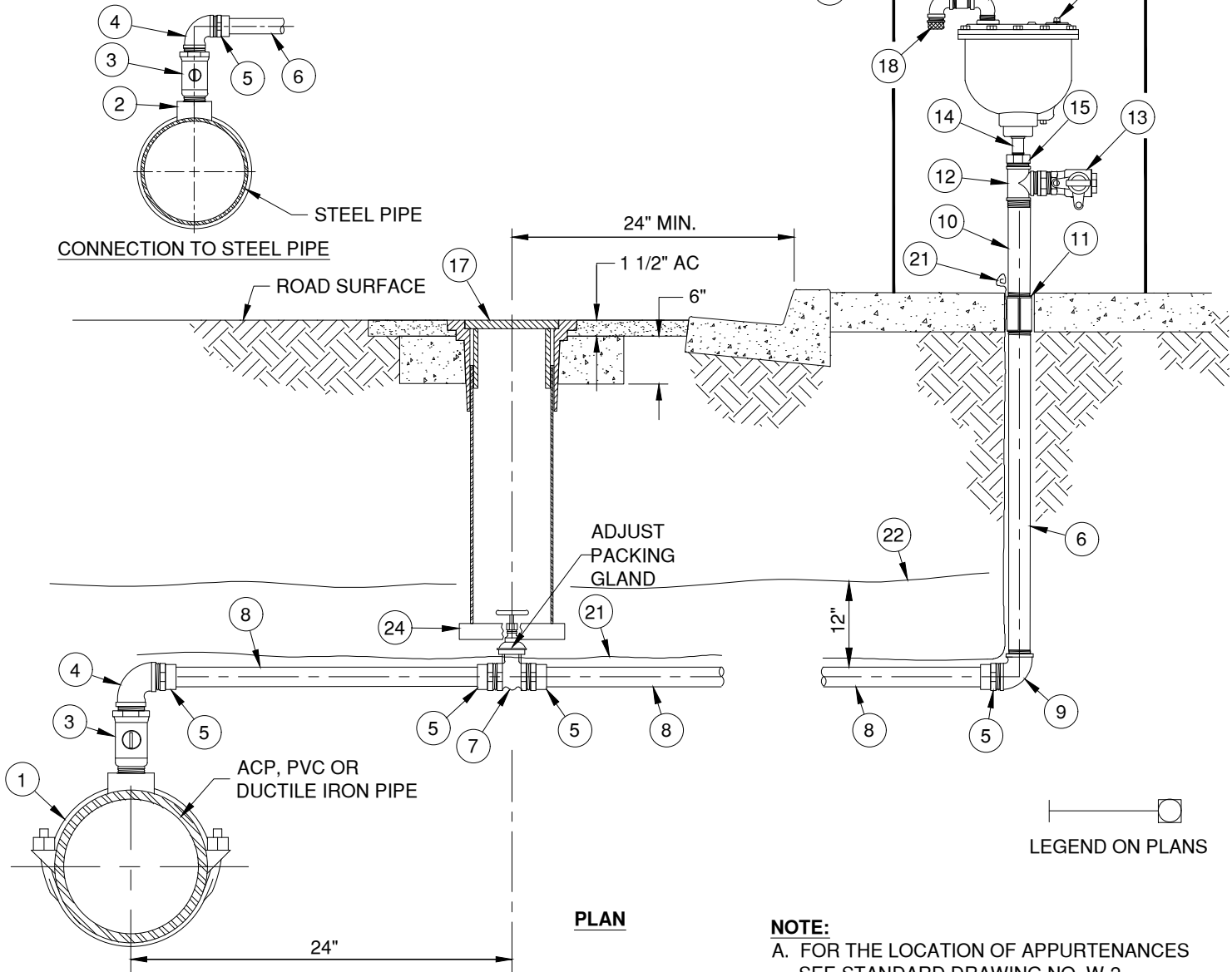
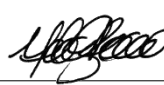


APPURTENANCE FINISH COLOR

RUSTOLIUM WHITE	RUSTOLIUM ALUMINUM
VALVE CAN LID	AIR & VACUUM ASSEMBLY



NO.	DESCRIPTION	NO.	DESCRIPTION
1	BRASS DOUBLE STRAP SADDLE FOR ACP & DIP, SS DOUBLE STRAP FOR PVC	13	2-INCH MIP x FIP BALL VALVE w/ 2.5-INCH FIRE HOSE ADAPTER
2	2-INCH STEEL HIGH PRESSURE 1/2 WELD THREADED COUPLING	14	1-INCH THREADED BRASS NIPPLE x 2-INCH LONG
3	2-INCH BRASS CORPORATION STOP, MIP THREAD x MIP THREAD	15	2-INCH x 1-INCH THREADED BRASS BUSHING
4	2-INCH BRASS 90° FIP x FIP	16	1-INCH AIR VACUUM RELEASE VALVE
5	2-INCH COPPER SWEAT ADAPTOR x MIP THREAD	17	VALVE WELL FRAME, ASSEMBLY, AND VALVE CAN LID PER W-25, PAINT VALVE CAN LID ONLY
6	2-INCH THREADED BRASS TUBING x REQUIRED LENGTH	18	BUG SCREEN w/ MIP THREADS, DO NOT PAINT
7	2-INCH BRASS GATE VALVE w/ BRASS HANDWHEEL, FIP x FIP THREAD	19	1-INCH x 3-INCH THREADED BRASS NIPPLE
8	2-INCH COPPER TUBING x REQUIRED LENGTH	20	1-INCH BRASS STREET ELBOW
9	1-INCH 90° BRASS FIP x FIP	21	TRACER WIRE
10	2-INCH x 12-INCH THREADED BRASS NIPPLE	22	WARNING TAPE
11	2-INCH THREADED BRASS COUPLING, EMBEDDED FLUSH w/ PAD	23	ABOVE GROUND ENCLOSURE PER DWG W-16
12	2-INCH THREADED BRASS TEE	24	REDWOOD BLOCKS 2-INCH x 4-INCH x 12-INCH LONG

APPROVED:

 District Engineer Date
 03/02/2026
 3/2/2026
 Latest Revision Date

 VALLEY CENTER MUNICIPAL WATER DISTRICT
 STANDARD DRAWING
1-INCH AIR & VACUUM W/ 2-INCH BLOW OFF COMBINATION

NOT TO SCALE
 DWG. NUMBER
W-10A