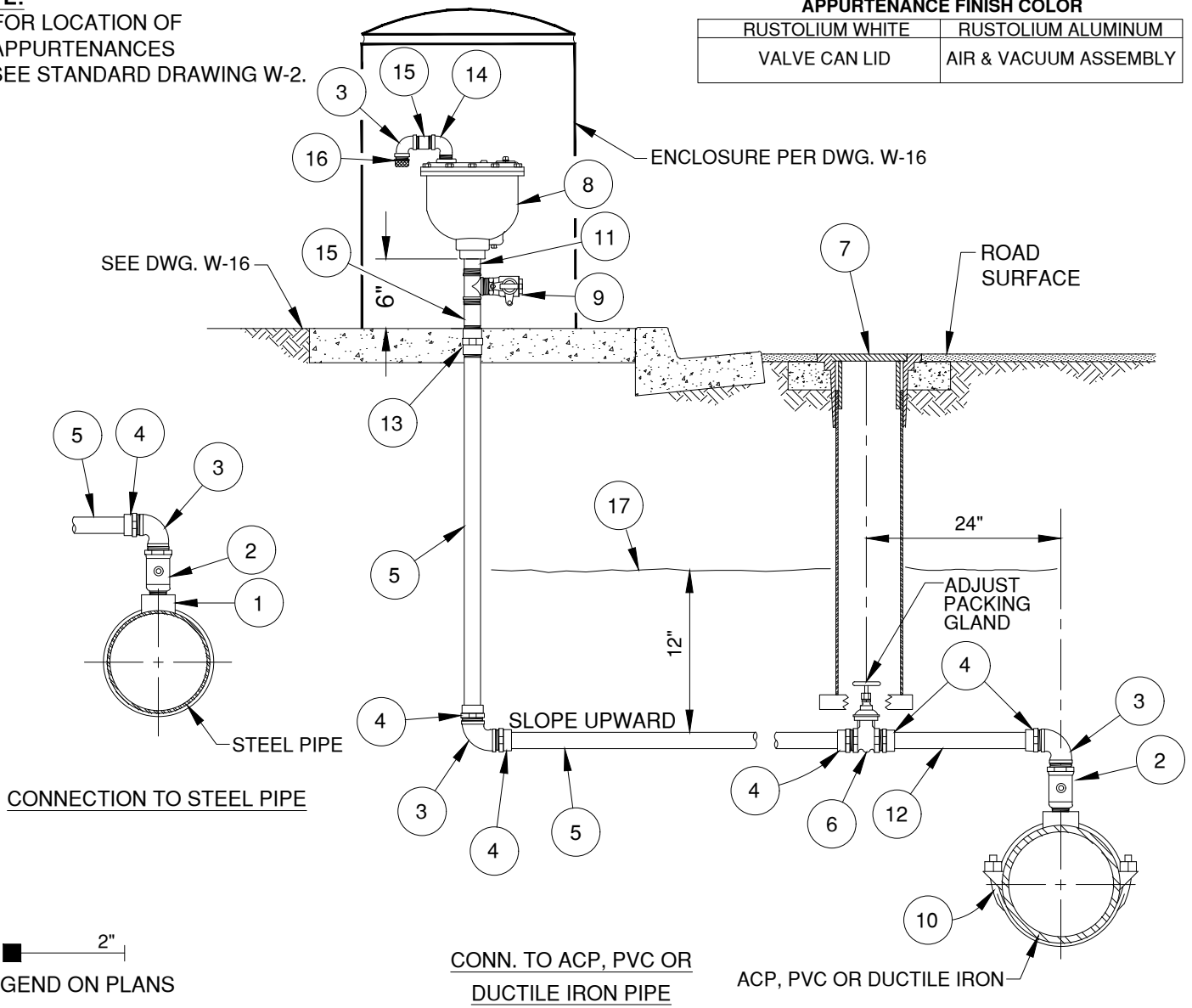


NOTE:


A. FOR LOCATION OF APPURTENANCES SEE STANDARD DRAWING W-2.

APPURTENANCE FINISH COLOR

RUSTOLIUM WHITE	RUSTOLIUM ALUMINUM
VALVE CAN LID	AIR & VACUUM ASSEMBLY



NO.	DESCRIPTION	NO.	DESCRIPTION
1	2-INCH THREADED HIGH PRESSURE STEEL 1/2 WELD COUPLING	10	BRASS DOUBLE STRAP SADDLE FOR ACP & DIP, SS DOUBLE STRAP FOR PVC
2	2-INCH BRASS CORPORATION STOP, MIP THREAD x MIP THREAD	11	2-INCH THREADED BRASS x SHORT NIPPLE
3	2-INCH FIP x FIP THREADED BRASS 90° FITTING	12	2-INCH COPPER x REQUIRED LENGTH
4	2-INCH COPPER SWEAT ADAPTER x MIP THREAD	13	2-INCH THREADED BRASS COUPLING, EMBEDDED FLUSH w/PAD
5	2-INCH THREADED BRASS x REQUIRED LENGTH	14	2-INCH BRASS STREET ELBOW
6	2-INCH BRASS GATE VALVE x FIP THREAD WITH BRASS HANDWHEEL	15	2-INCH x 3-INCH THREADED BRASS NIPPLE
7	VALVE WELL FRAME, ASSEMBLY, AND VALVE CAN LID PER W-25, PAINT VALVE CAN LID ONLY	16	BUG SCREEN w/ MIP THREADS, DO NOT PAINT
8	2-INCH AIR & VACUUM RELEASE VALVE	17	WARNING TAPE
9	2-INCH MIP x FIP BALL CORP	18	NOT USED

APPROVED:

 District Engineer
 03/02/2026
 Date
 3/2/2026
 Latest Revision Date

VALLEY CENTER MUNICIPAL WATER DISTRICT
 STANDARD DRAWING
2-INCH AIR & VACUUM RELEASE

NOT TO SCALE
 DWG. NUMBER
W-14